

NTR-ACBE-USA

# Castlevania®

## Portrait of Ruin™



NINTENDO DS™



Games Experience May Change During Online Play

**KONAMI**

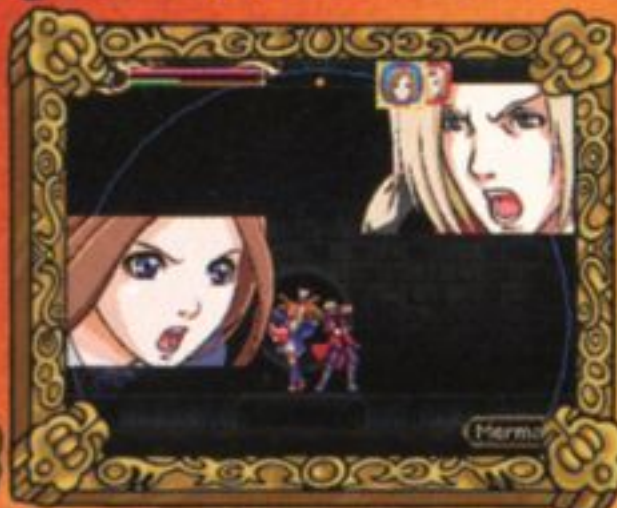
# The portraits hold the secrets of the castle!

Wireless DS  
Multi-Card  
Play  
1-4

An ancient vampire threatens the fate of the world utilizing Dracula's accursed castle and mystical paintings to open portals of Death! Battle together as Jonathan Morris, a young man who wields a legendary whip, Vampire Killer, and Charlotte Aulin, a spellcaster with tremendous magical abilities to conquer evil in man's darkest hour!



Explore exotic locales through portals created by the lord of the castle!



Switch characters in the heat of action or fight side-by-side using abilities of both heroes!



Battle hordes of enemies and huge bosses in the quest to vanquish evil!



THE OFFICIAL SEAL IS YOUR ASSURANCE THAT THIS PRODUCT IS LICENSED OR MANUFACTURED BY NINTENDO. ALWAYS LOOK FOR THIS SEAL WHEN BUYING VIDEO GAME SYSTEMS, ACCESSORIES, GAMES AND RELATED PRODUCTS.

LICENSED BY

**KONAMI**

**Nintendo**

FOR SALE, RENTAL AND USE ONLY IN USA, CANADA, MEXICO AND LATIN AMERICA.

Konami Digital Entertainment, Inc.  
1400 Bridge Parkway, Redwood City, CA 94065

Produced by Koji Igarashi  
[www.konami.com](http://www.konami.com)

## IMPORTANT!

READ THE INSTRUCTION AND SEPARATE HEALTH AND SAFETY PRECAUTIONS BOOKLETS BEFORE SETUP OR USE OF YOUR SYSTEM.

## WARNING:

IF YOU HAVE EPILEPSY OR HAVE HAD SEIZURES OR OTHER UNUSUAL REACTIONS TO FLASHING LIGHTS OR PATTERNS, CONSULT A DOCTOR BEFORE PLAYING VIDEO GAMES.

DS MULTI-CARD WIRELESS CONNECTED GAMES REQUIRE ONE GAME CARD PER PLAYER. WIRELESS ROUTER OR NINTENDO WI-FI USB CONNECTOR AND BROADBAND ACCESS MAY BE REQUIRED FOR ONLINE PLAY.

© 1986 2006 Konami Digital Entertainment Co., Ltd. "CASTLEVANIA" is a registered trademark of Konami Digital Entertainment Co., Ltd. "CASTLEVANIA: Portrait of Ruin" is a trademark of Konami Digital Entertainment Co., Ltd. "KONAMI" is a registered trademark of KONAMI CORPORATION. Published by Konami Digital Entertainment, Inc. Developed by Konami Digital Entertainment Co., Ltd.

LICENSED BY NINTENDO.  
NINTENDO, NINTENDO DS AND THE OFFICIAL SEAL ARE TRADEMARKS OF NINTENDO. © 2006 NINTENDO.

TEEN

T

Blood and Gore  
Mild Language  
Suggestive Themes  
Violence

ESRB CONTENT RATING [www.esrb.org](http://www.esrb.org)

Games Experience May Change During Online Play

MADE IN JAPAN



NTR-ACBE-USA

NINTENDO DS™

KONAMI

# Castlevania

Portrait of Ruin™



LICENSED BY

Nintendo



NTR-ACBE-USA